

Recall / Set up Data Memory

Recall Date stored in PT-U80 then change Date as you want
 Recalled Date is stored into simple report or CSV format

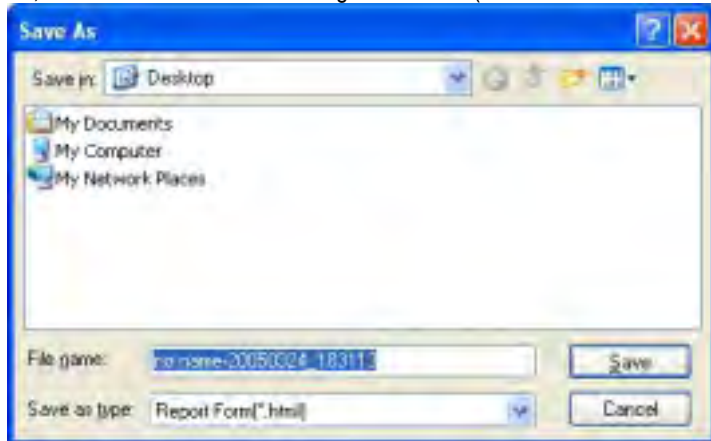
The screenshot shows the 'Thermometer Application' window. It features a menu bar with 'File', 'Edit', 'View', 'Tools', 'Help', and 'About'. Below the menu bar are several buttons: 'Print', 'Copy', 'Paste', 'Delete', 'Refresh', and 'Help'. A 'Memory Analysis' section shows a value of '35'. A table displays data with columns for 'Memory No.', 'Temp (°C)', 'Speed (°C)', 'Time', 'Battery', 'RAM (°C)', and 'ROM (°C)'. The table contains 10 rows of data. At the bottom, there are two buttons: 'Select All Memory No.' and 'Unselect All Memory No.'. The Optex logo is visible in the bottom right corner.

Callouts and their corresponding actions:

- Install data from Thermometer**: Points to the 'File' menu.
- Forwarding Data checked in the Check Box**: Points to the 'Forwarding Data' checkbox.
- Store Data List by Report format or CSV file format**: Points to the 'Report' and 'CSV' radio buttons.
- Select Display Value**: Points to the 'Memory Analysis' value '35'.
- Check the date you want to store**: Points to the date selection area.
- Display Number of Memorized Data**: Points to the 'Memory Analysis' value.
- Check items you want to store**: Points to the table of data.
- List for Data Captured From Thermometer**: Points to the table of data.
- Log-on Optex Website**: Points to the 'Help' button.
- Click here to check all items**: Points to the 'Select All Memory No.' button.
- Click here to clear all items checked**: Points to the 'Unselect All Memory No.' button.

Sample) Make report form from Date stored into PT-U80

- 1) Connect PT-U80 to PC then activate "THERMO HUNTER" program
- 2) Select "Recall / Set up Data Memory" on TAB
- 3) Push 2 to recall Data Memory from PT-U80
 (Recalling Data Memory automatically starts when visiting Recall and Set Up Data Memory Tab from other Tab)
- 4) Push 3 to see stored dialogue of Data (Refer to below drawing)



5) Select report form from dialogue file then push "Store" to complete

6) Refer to Report Format below. To click "W" located upper-right to edit Report in Microsoft Word

The screenshot shows a Microsoft Internet Explorer browser window displaying a report form. The address bar shows the path: C:\Documents and Settings\Owner\Desktop\name-20050324_183013040281\html. The form includes fields for Class No., Serial No. (no name), Date, (Dept.), and Author (Name). Below the form is a table with the following data:

Mem No.	Moos. Target	Temp. (-C)	Time	Room Temp. (-C)	Max (-C)	MIN (-C)	Notes
1		25.7	2005/01/01 00:00:00				
2		31.5	2005/01/01 00:00:00				
3		21.1	2005/01/01 00:00:00				
4		21.0	2005/01/01 00:00:00				
5		24.7	2005/01/01 00:00:00				
6		17.3	2005/01/01 00:00:00				
7		146.0	2005/01/01 00:00:00				
8		206.5	2005/01/01 00:00:00				
9		126.5	2005/01/01 00:00:00				
10		174.1	2005/01/01 00:00:00				
11							
12							
13							
14							
15							
16							
17							

TASHIKA BOEKI SHOKAI K.K.

1-12, Kaiyo-cho, Ashiya, 659-0035, JAPAN

Tel: + 81-797-23-9035 Fax: + 81-797-23-2105

e-mail: sales@tashika.co.jp URL: www.tashika.co.jp